

**SAFER
ROADS
ALLIANCE**



Dangers of Speeding

Dangers of Speeding



In 2018, **22.8** per cent of total fatal collisions involved drivers travelling at a speed too great for the given conditions

5.2 per cent of total collisions in 2018 involved unsafe speed

The posted speed limit is for ideal driving conditions – so slow down for poor driving conditions and adhere to the posted speed limit

Dangers of Speeding



Let's say you're about 40 metres away from a deer on the road. If you are driving the posted speed limit of 60 km/h, you would cover at least 17 metres during a typical one second perception-response time (PRT) before you began to react to the hazard. You would then need about 20 metres to brake to avoid the deer. All together, you would need 37 metres to perceive, respond and come to a stop.

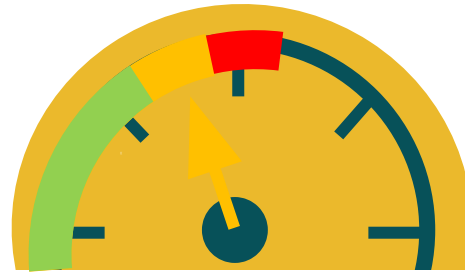
If you were speeding at 75 km/h you would not have enough distance to come to a full stop and would result in a collision.



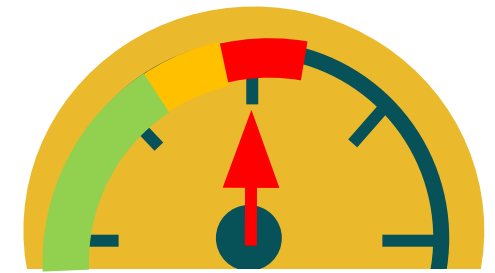
Dangers of Speeding



Did you know?



Driving *only* **10 km/hr above the speed limit**, more than doubles crash risk.



Driving **20 km/hr above the speed limit?** That increases crash risk up to *six times*.

Please **Take the Pledge** to do all that you can do to keep our highways safer for you and all that travel on them.

[Take the Pledge](#)



Drive Safe

More road safety tips can be found on

saferalbertaroads.ca